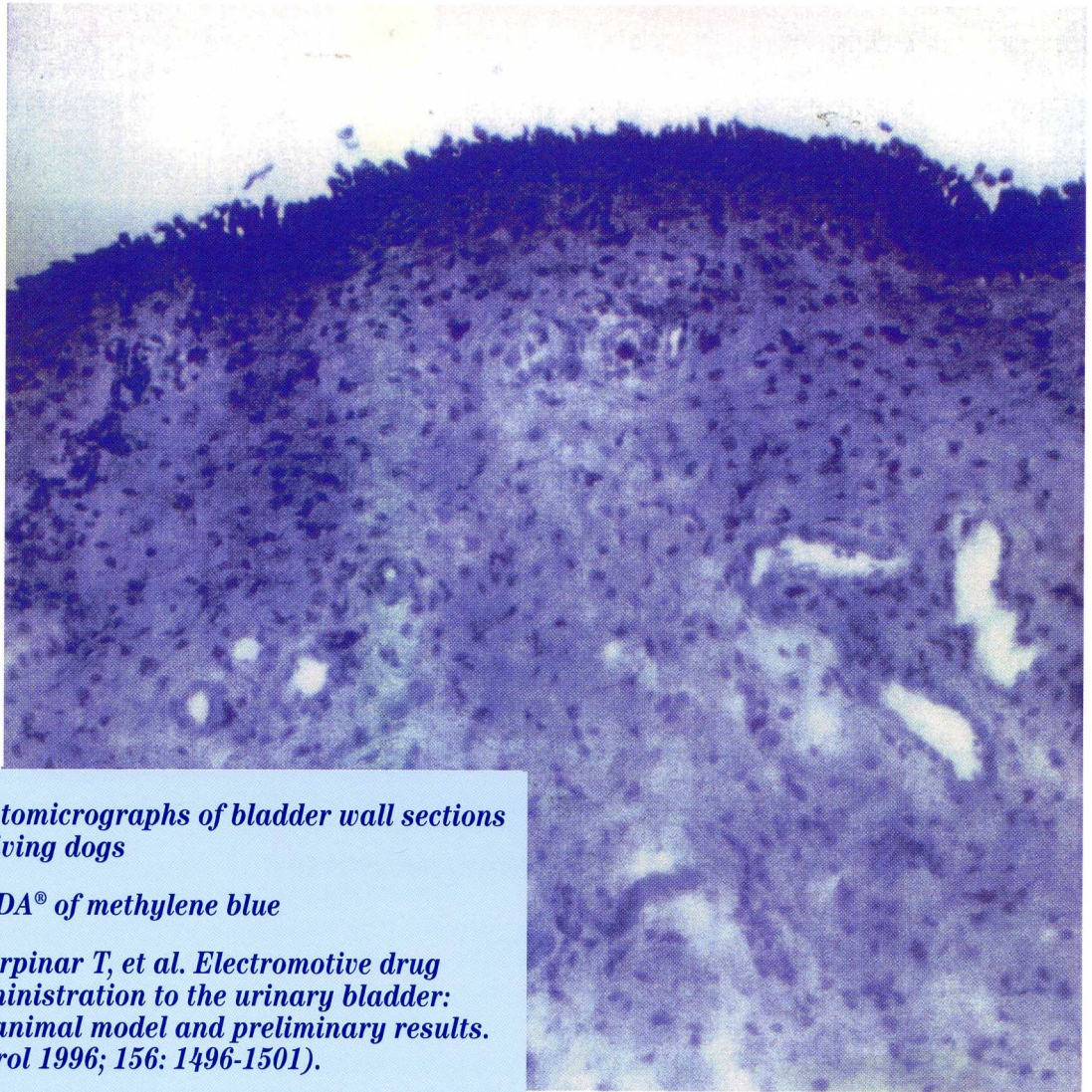


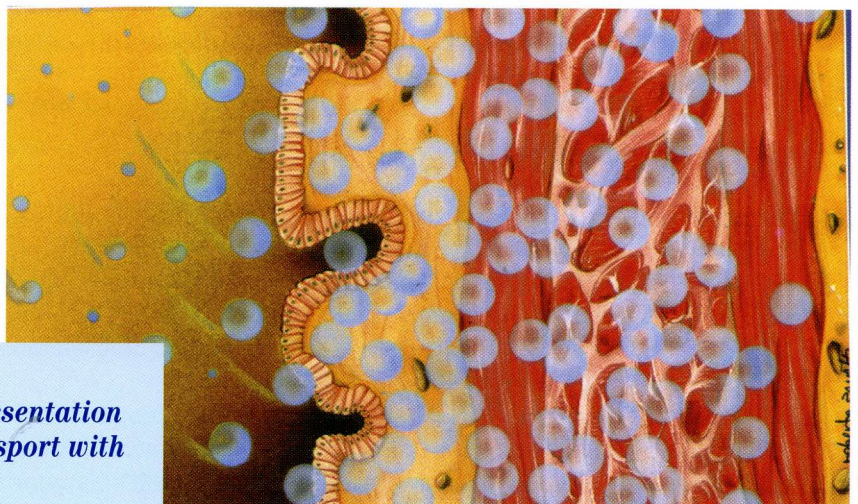
# MECHANISM OF ACTIVE TRANSPORT WITH EMDA®



*Photomicrographs of bladder wall sections  
of living dogs*

*EMDA® of methylene blue*

*(Gürpınar T, et al. Electromotive drug  
administration to the urinary bladder:  
an animal model and preliminary results.  
J Urol 1996; 156: 1496-1501).*



*Graphic representation  
of active transport with  
EMDA®*